

- Industrial Dispensing Equipment & Adhesive Systems
- Industrial Tooling & Maintenance Services
- Industrial Contracting, Engineering & Automation

Strong in Hot Melt Equipment Solutions

Your dedicated partner

InduTech Int. has become over the years a well known player in the world of hot melt equipment with subsidiaries in Zandhoven (B), Vorden (NL) and Louvil (FR). All our employees can look back on years of related field experience and get properly trained for their job : your guarantee for professional advice. A complete range of hot melt equipment, carefully selected on quality and price, combined with a flexible and efficient service make of **InduTech Int.** your dedicated partner to rely on for all your hot melt applications and related service activities.



Our expertise is your guarantee



Up to now nobody has been able to solve all gluing applications with one single glue. Every application, every single customer has its own set of specific demands. With our expertise we guide you in a natural way to the right choice of melting system out of our complete range of melting equipment. Our expertise is your guarantee for a long lasting solution for your glue application.

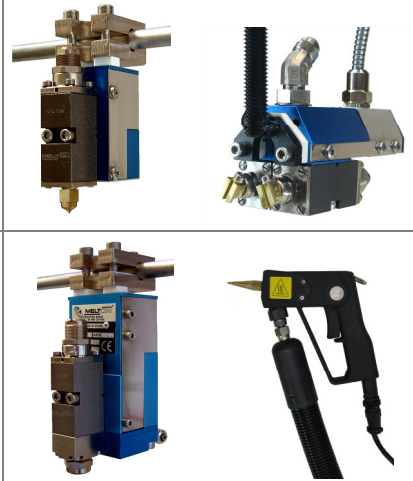


- **Packaging and light product assembly :**
a series of tank units from 4 to 50 kg tank capacity equipped with high flow piston pumps for low and medium viscosity glues and compatible controllers
- **Product assembly :**
a series of high standard gear pump units for polyamide and APO grade adhesives with melt rates from 4 to 400 kg/h and accurate flow control
- **Assembly with reactive glues :**
from a complete range of tank units with inert gas blanket protection up to drum unloaders for 20 and 200 kg drums of PUR, tailored with simple controls or state-of-the-art PLC controls with touch screen.

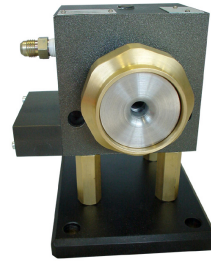
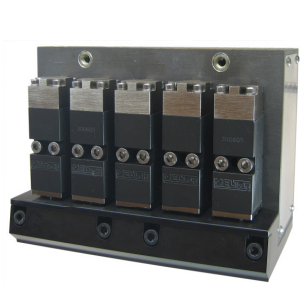


From pure standard ...

The success of a glue application is to a large extent dependant on the glue gun performance. Even though a number of application techniques became standard practice, **InduTech Int.** masters the knowledge of selecting and integrating the right application principle into your production process, if needed extended with small automation machinery to a turn-key solution ! When the application demands a more specific approach than ordinary, we design, engineer and manufacture solutions to meet the demands of the most demanding customers.



... to 100% engineered solutions



Enjoy our service



InduTech Int. has built its reputation on a comprehensive service package.

You can count on our own Technical Department for field repairs, service interventions and all maintenance activities. We offer complete service also for Nordson® equipment for which we have many high quality compatible parts on stock at reduced price !

We pride ourselves as a flexible yet efficient company, competitively priced and easy to do business with. We hope to welcome you too amongst our customers in the near future !

